



Top five residential considerations to check

These notes provide information to help you decide the suitability of your choice of residential activity.

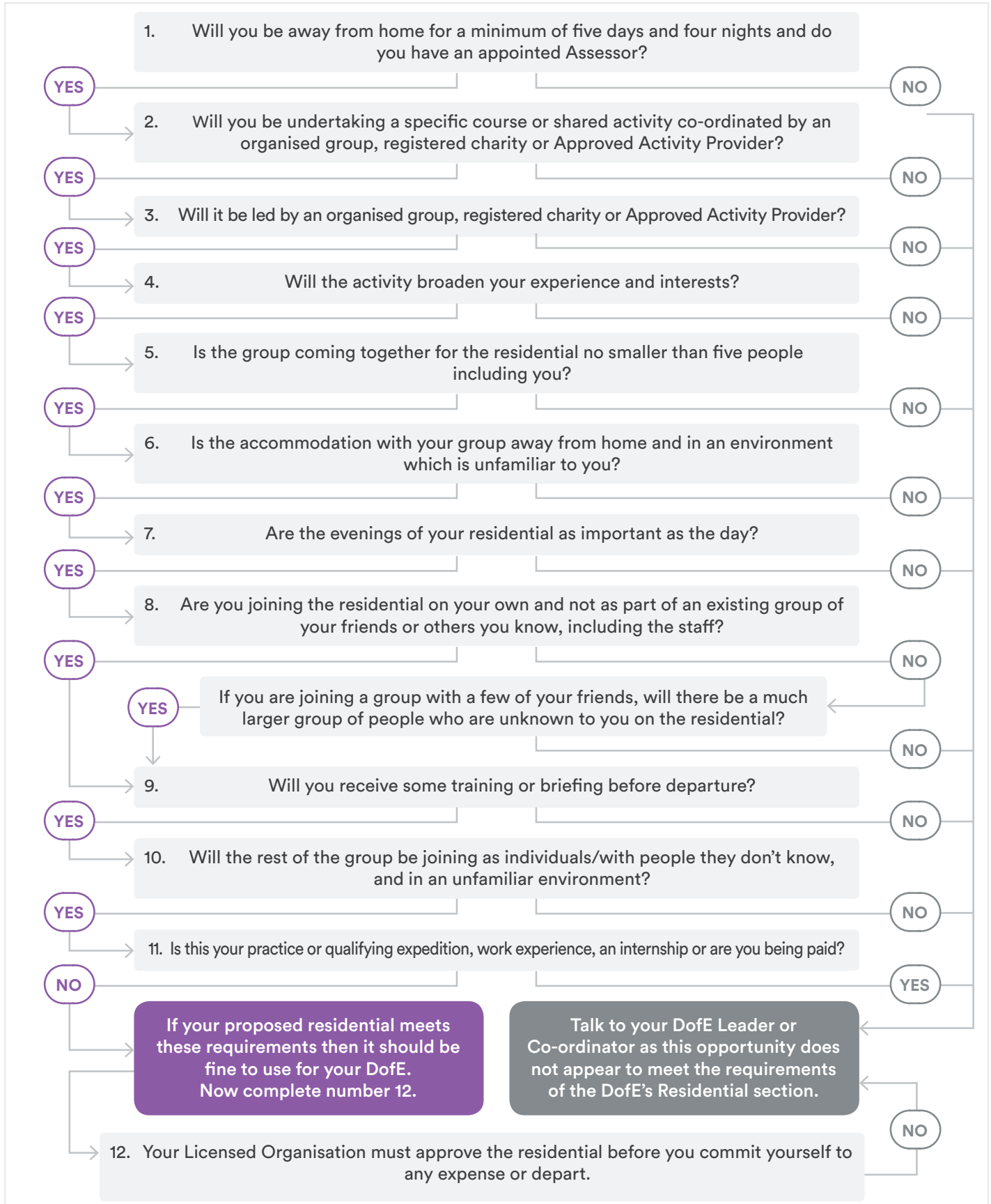
This can also be found in The Handbook for DofE Leaders (7th edition) pages 94/95.

Residential considerations	Further explanation
1. The participant must be away from home for a minimum of five days and four nights and must have identified an Assessor.	<ul style="list-style-type: none"> - Attending a group activity during the day but returning home each evening is not allowed. Participants should stay overnight with the group. Individual home stays or staying with a friend or relative are not allowed. - In most cases this will be consecutive days and nights. In exceptional circumstances, and at the discretion of the Operating Authority, the residential could be spread over two weekends in the same 12-month period during which the same activity must be pursued. - Evenings are as important as the day, so participants should be mixing with the group during planned activity and down time. - The Assessor should engage with the participant during the residential and must be familiar with the aims and objectives of the Section.
2. There must be a specific, shared course or activity to broaden experiences and interests done with an organised group, registered charity or Approved Activity Provider.	<ul style="list-style-type: none"> - Doing an activity individually during the day whilst staying in a residential setting with others would not count. - Participants must volunteer their time on the residential and not receive payment; however, they may receive money for expenses. - Work experience and live-in internships are not acceptable. - Going on holiday is not an appropriate activity. The participant should do some form of purposeful activity, such as a training course leading to a qualification, a course which develops skills or interests or which involves volunteering. As with other sections, this should not be an activity which is part of the curriculum. - Participants cannot count their practice or qualifying expeditions for this section.
3. Consider the group size and make up.	<ul style="list-style-type: none"> - The group should be no smaller than five people (including the participant) who are all on the residential experience, as the interaction with others is crucial to the success of the residential and a group any smaller than this will not provide sufficient opportunities. - Participants should ideally join a residential as an individual. A few participants may know each other when they are joining a larger group, where possible these participants should be separated. - Other members of the group can be of any age. - The staff should also be unknown to the participant (for example, helping Bronze or Silver participants with their expeditions for your school or DofE group is not acceptable).
4. Before the residential, the participant should carry out appropriate training, briefing or research.	<ul style="list-style-type: none"> - Participants should research the activity that they have chosen and follow any pre-activity instructions or requirements. - In some cases this may mean meeting some of the people on the residential once or twice before the residential for essential training.
5. The Licensed Organisation must have approved the planned residential.	<ul style="list-style-type: none"> - All residential opportunities must be approved by the Licensed Organisation in advance of the residential taking place.

Does the residential count for your Gold programme?

Residential

Use this flow chart to help decide if an opportunity can count for your Gold DofE programme. You must also check it against the five considerations. If you are using a Residential section Approved Activity Provider then your trip will meet these requirements.



Below are some recent examples of team volunteering activities which were undertaken by young people for their DofE programme.

Residential

Residential – Activity-based

Charlie Dessain spent a month in Gunjur, a village in The Gambia helping to build a school classroom block with a local community linking charity. The group from around Wiltshire fundraised individually and came together for training in the UK before flying out to the village. The group lived with a local family in their compound and worked alongside the village builders on site.

“It was an invaluable experience where I overcame many challenges including language, floods and the heat. Being adopted into a local family, the whole team was completely immersed in the Gunjurian culture and was exposed to the real lifestyle of the people.” – Charlie, Gold participant



Residential – Learning

Dhan-Shan Rana spent eight days learning about astronomy, space science and technology at Senior Space School UK based at the University of Leicester. The school is a mixture of lectures and hands on experiments from leaders in the field. There are also fun social activities such as scuba diving, camping under the stars and skydiving in a wind tunnel.

“Space School is one of the best places I have ever been to and has fuelled my appetite to learn more about a perpetually puzzling universe... I have also made a lot of friends who may be future colleagues and with whom I will keep in contact for a long time..” – Dhan-Shan, Gold participant



Residential – Services to others

Francesca and Daniella Nice used the Scout Jamboree in Chelmsford for their residential – 30,000 young people from all over the world attended the Jamboree for two weeks. They volunteered to join separate support teams at the Jamboree.

“Having completed the residential I am far more confident when I meet new people.” – Francesca, Gold participant

“My proudest moment was dealing with a leg injury and having to speak in French so that my patient felt reassured and comfortable.” – Daniella, Gold participant



Residential – Environment and conservation

Thirty-five young people with additional needs enjoyed an open residential programme of adventurous activities and environmental education run by Kirklees Operating Authority. The young people achieved so much in the environmental part of their residential project that they fulfilled the criteria for the John Muir Award as well.

After the residential many of the group joined a local conservation group ‘Conservation Angels’ and have built several sculptures from willow including a wheelchair accessible willow igloo. They learnt how to lay a footpath from a countryside officer and successfully obtained a grant which enabled them to buy materials and lay a path to allow wheelchair access to a local woodland.



Residential – Services to others

Kate Joyce travelled to Chernobyl to work with teenage victims of the nuclear disaster. The group from the UK helped organise adventure activities during the day and helped with the household duties in the evening.

“Through the experience I gained confidence working with people of a different language and background.” – Kate, Gold participant

