



# iPads at Kimbolton

Dear Parent,

I am delighted to introduce this pack with details of how and why iPads are used at Kimbolton School. We first introduced iPads for pupils in Autumn 2014 and they are now part of every day school life for all of our year groups.

In the same way as smart phones have assimilated themselves into our every day life over the past decades, iPads have become similarly 'de rigueur'. They slip seamlessly into every pupil's 'toolkit', just like the pencil case, PE Kit and textbook.

You will have guessed that I am a strong advocate! Having used an iPad myself in lessons and observed how colleagues have been able to take their teaching into new areas with a tablet in their hand, I am excited to see the new educational possibilities that having this technology in the classroom has brought to the school.

As a school, we are aware that, ultimately, iPads are only one of many 'learning tools'. They are a complement to our more 'traditional' ways of teaching and learning.

Do enjoy perusing what follows beneath. If you have questions, please let us know ([ipads@kimbolton.cambs.sch.uk](mailto:ipads@kimbolton.cambs.sch.uk)) as we look forward to Kimbolton pupils and teachers exploring further the opportunities that iPads and digital learning have to offer.

Mike Reed, Head of Digital Learning, Kimbolton School



## Why do our pupils have iPads?

It is not future technology. It is the present in terms of pupil experience of mobile phones, internet and personalised technology. It will be their future working/learning experience.

iPads will help pupils organise, communicate, learn and study at home and in school.

Individual access to technology is not something that should happen in a few rooms in a school. It should be for everyone, everywhere, anytime. iPads allow that.

Pupils are used to having access to the internet at all times, in all places – school should not be the exception.

Why would we not want pupils to have access to the greatest source of information ever assembled and study in their own innovative and personalised way?

We need to make tablets a means of education for pupils not just entertainment. Pupils need to learn about safe, effective, educational use of this technology.

We want to make the educational experience for pupils at Kimbolton as varied, dynamic and stimulating as possible.



## Why have we opted for iPads?

- Proven technology and support
- Familiar and intuitive to use
- Apple TVs installed in classrooms
- Apps catalogue is vast – many teaching and learning opportunities
- Successfully adopted by other schools

## The Timetable for iPad Setup for New Pupils

<b>June</b>	The School Information Pack is sent out to parents of new pupils, including details of how to read and sign the IT Acceptable Use Agreement.
<b>Early July</b>	The iPad Setup guide is emailed to parents, containing pupil's account information and a link to the Setup Videos. Videos 1, 2 and 3 can be completed immediately.
<b>Late August</b>	With pupils having moved into their new year groups, Video 4 can be completed the week before coming to school.

## Glossary

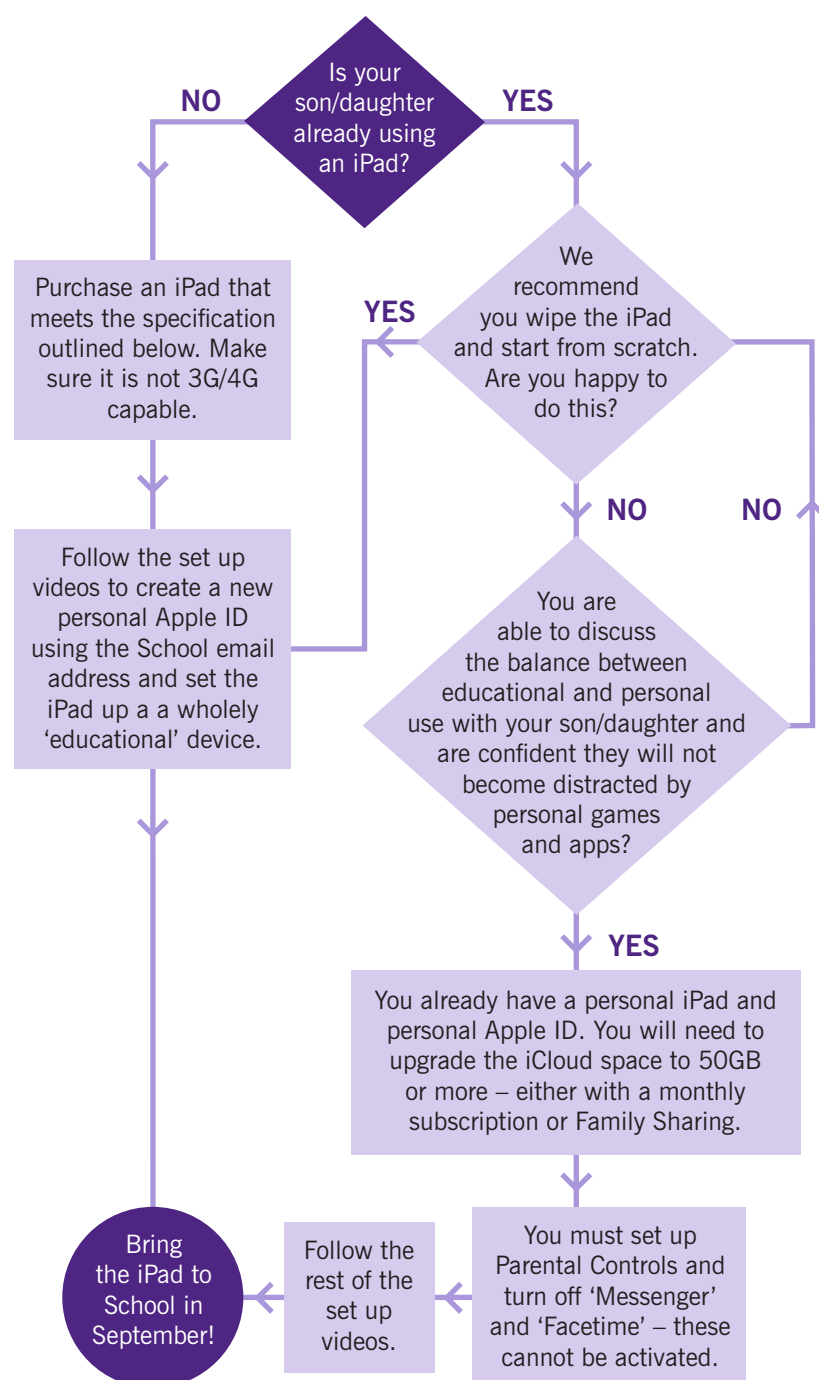
3G/4G	3rd Generation/4th Generation – connection of the iPad directly to the internet, ie without going through the secure school network.
Apple TV	Allows projection from an iPad onto classroom boards and screens.
Apps	Applications – software for mobile devices that are designed for specific tasks or purposes.
AUA	Acceptable Use Agreement – a document signed by both pupil and parent agreeing to the terms of iPad use within School.
Foldr	iPad app that allows pupils to access their network files and deliver their work to teachers.
iCloud	Document storage or backup on online areas, ie not on servers/drives at home or school.
MDM system	Mobile Device Management system – a software system at School that allows us to supervise usage, add/manage applications and apply internet safety rules centrally. All iPads used in School will be added to this system.
Showbie	Kimbolton School's Virtual Learning Environment, where teachers publish work and resources, and pupils can complete and hand-in work.
VLE	Virtual Learning Environment – the online world of lessons and subject content for pupils to access and learn from.

## Setting up your child's iPad

### How do I set up my child's iPad?

Once the Acceptable Use Agreement has been signed and confirmed on Engage you will be emailed your son/daughter's account details and a link to the iPad Setup Video Guides. Accounts will be created by early July – please wait until receiving these details before setting up the iPad.

The simplest way to set the iPad up is to start with a new or freshly-wiped device. Then you can follow the steps in the guide to create a fresh Personal Apple ID and set the iPad up as a completely 'educational' device. There is an alternative method, where you can use a Personal Apple ID you have already set up for your son/daughter. This is also covered in the Video Guide. The **iPad FAQs for Parents** document, available from [www.kimbolton.cambs.sch.uk/ipads](http://www.kimbolton.cambs.sch.uk/ipads) covers the most up to date answers to (hopefully) all the questions you may have. Please read this document next – if you still have questions, please email [ipads@kimbolton.cambs.sch.uk](mailto:ipads@kimbolton.cambs.sch.uk)



## Introduction of iPads

### How are iPads used by pupils?

Pupils and teachers are continually finding new ways to utilise the technology, but these are some of the ways already being seen in school:

- Pupils' research and writing – promoting independent learning
- Pupils' creativity in subjects using apps for art, drama, design, planning, animations, mind-mapping
- With projector and Apple TV – projection and teaching from tablet sharing with pupils
- Use of Showbie for teaching and learning
- Ease of internet access and immediate online research, video, resources etc.
- Lesson and subject resources available online and delivered not printed
- Camera/video function to record/project experiments and presentations
- Subject related apps in the classroom and at home
- Annotation of texts/notes, collaborative work and sharing of work
- Skype/internet link-ups with partner schools
- Applications possible in all subject areas
- Online submission of digital homework
- Podcasts, blogging, video, forums, the 'flipped classroom'

### How do iPads improve the quality of teaching and learning?

The most effective lessons are those where students receive highly personalised feedback and where the level of challenge is high for all students, so that they are self-motivated and develop as independent learners. Used effectively the iPad provides the teacher with a greater set of tools at their disposal to deliver excellent lessons.

However, teachers say that the biggest difference to student progress is the student's self-motivation, engagement and independent learning skills and that these have the biggest impact on their success. A personal iPad offers new opportunities to motivate and engage students of all abilities. It empowers students to take control of their learning and, depending on the circumstances, to work in a more individual or collaborative way.

### Don't iPads get in the way of 'real teaching'?

No. Teaching is varied in style already and needs to be for different types of subjects and learners. iPads are another part of the teacher's toolkit of methods and classroom activities. iPads may be used by a teacher for a whole lesson or part of it, or not at all if inappropriate. We will continue to teach in a way that encourages pupils to be active and successful in their learning.

### Do iPads replace writing and use of paper?

No. Pupils still need to write answers for their exams and we will continue to do plenty of that. Pen and paper, files and exercise books are still a major part of each pupil's school life.

### Have iPads replaced the need for ICT teaching?

No. PSHE covers Cyber-Safety training and comprehensive lessons on Digital Online Health, while the Digital Learning curriculum covers training in the use of many iPad apps, as well as the suite of Microsoft Office programs, before moving on to a series of increasingly challenging Python Programming projects.

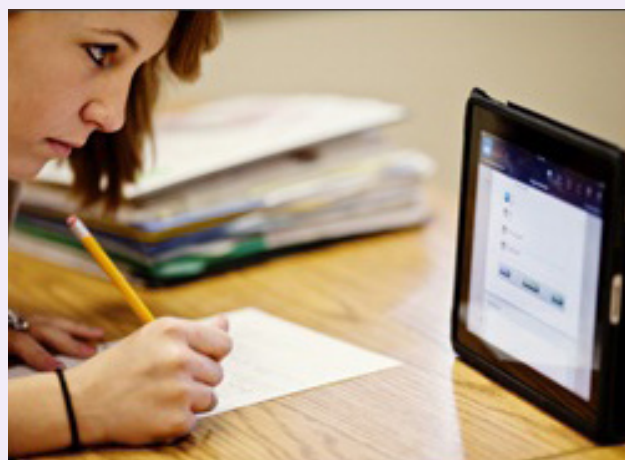
### How are iPads used safely?

We have comprehensive IT and internet security policies deployed across the school network. Pupils will read and sign up to an Acceptable Usage Agreement before arriving at school and be educated in Internet Safety during their PSHE lessons. We will also have a management system in place to monitor and safeguard iPad use in school.

## The Kimbolton Digital School Mix

### The Digital School has the following elements:

- iPads for all
- High-speed internet access at school
- Online educational resources known as a 'Virtual Learning Environment'
- Active classroom IT – Apple TVs and interactive whiteboards
- 'Blended learning' – making use of internet with collaborative, active learning in lessons
- Use of eBooks or iBooks and other digital resources
- Assessment and assignments submitted electronically
- Use of online lectures and courses for extension and enrichment



## Understanding iPad options and what you need to provide

iPad Type	Currently on sale from Apple?	Meets School specification?	Headphones connector type
iPad 6	✗	Yes, currently, but there is a chance it may need replacing in the future	Audio Jack
iPad 7	✗		Audio Jack
iPad 8	✗	Yes	Audio Jack
iPad 9	✓	Yes	Audio Jack
iPad 10	✓	Yes	USB-C
iPad Air 3	✗	Yes, currently, but there is a chance it may need replacing in the future	Audio Jack
iPad Air 4	✗		USB-C
iPad Air 5	✓	Yes	USB-C
iPad Pro 3	✗	Yes	USB-C
iPad Pro 4	✗	Yes	USB-C
iPad Pro 5	✓	Yes	USB-C

### iPad Case

The iPad should have a durable and robust case- make sure you acquire one suitable for your model of iPad. Amazon sell many robust designs. We also recommend screen protectors, as replacing a screen protector is easier than replacing a broken screen.

The most common type of breakage is a shattered screen from dropping the iPad on its corner. Having a durable case able to absorb these types of shocks will help protect the iPad during day-to-day use.

### Insurance

You need to have the iPad insured – the school cannot contribute in the event of breakage and the iPad will need to be repaired or replaced as soon as possible.

Check your home insurance to see whether your policy covers school usage – often home insurance can be extended to cover expensive items. Separate iPad insurance is available if necessary.

Answers in the FAQs covers what happens while an iPad is being repaired – teachers are always understanding and flexible if a pupil is unable to bring in their iPad for a few days.

### Additional Specifications

Storage	Meets School specification?
32GB	✗ You may need to keep tabs on storage space and regularly delete unused apps
64GB	✓
128GB	✓
256GB	✓

Connectivity	Meets School specification?
WiFi only	✓
3G/4G Cellular	✗ The SIM card can be removed if you wish to use a cellular iPad



Please also read the iPad FAQ document, for answers to the latest popular questions